

Jackson

Avenger® HT

Project _____
 Item _____
 Quantity _____
 CSI Section 11400 _____
 Approval _____
 Date _____

Avenger® HT

Models

Avenger® HT



Standard Features

- Automatic fill
- Push button start
- Labyrinth type door design
- Automatic pumped drain for floor and wall drain installations
- Pre-installed water pressure regulator
- Stainless steel wash pump
- Electromechanical components
- Manual override for extended wash and deliming
- Simplified controls allow easy access for operation and service
- Door safety switch
- Pumped drain
- One (1) each peg and combination rack included
- Above water scrap tray
- Built-in chemical pumps for detergent and rinse aid

Mandatory Specs

Specify voltage _____

Options

- Water Hammer Arrestor
- Back Panel
- Drain Quench System
- 480V Electrical
- Scale Prevention System (SPS)
- Replacement Cartridges for SPS (2-pack)
- Tie Down

Accessories

- 36-Compartment Rack
 - 4-1/8" tall (105 mm)
 - 5-5/8" tall (143 mm)
 - 7" tall (178 mm)
- Combination Rack
- Peg Rack
- Machine Stand
 - 6" (152 mm) high
 - 18" (457 mm) high

Specifications

Uses 1.1 gallons (4.2 liters) of water per rack
 Uses 26.4 gallons (99.9 liters) of water per hour
 Cleans 24 racks per hour
 Two minute automatic cycle
 Powerful 3/4 hp wash pump motor
 Built-in booster heater
 Fresh water rinse eliminates wash water contamination
 Air insulated between body and stainless steel housing
 Sani-Sure™ feature assures proper rinse water temperature
 304 stainless steel construction
 Unique timer allows the machine to be customized for extended cycle times

Notes:

A vent hood is not recommended above the Jackson Avenger® HT as it does not produce excessive vapors. *Always check with the local building code to know what type of ventilation is required for commercial dish machine installations in your area.*

Normal operation of the Avenger HT® generates steam that may escape from the door. Materials such as wood laminate, veneers, etc. are unsuitable for use in areas exposed to dishwasher steam and detergents. Stainless steel or other moisture-resistant shields are recommended for surfaces adjacent to Avenger HT® sides and top.



SHIPPING ADDRESS
 6209 North U.S. Highway 25E
 Gray, KY 40734

MAILING ADDRESS
 P.O. Box 1060
 Barbourville, KY 40906

Tel: 1-888-800-5672
 Fax: 606-523-1799
 info@jacksonmsc.com

www.jacksonmsc.com



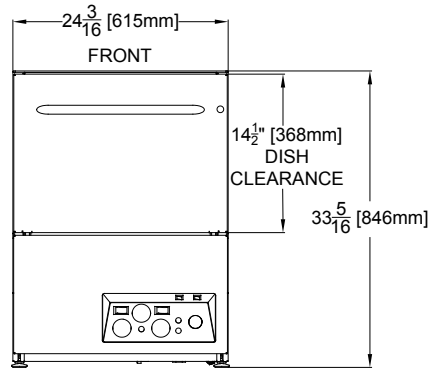
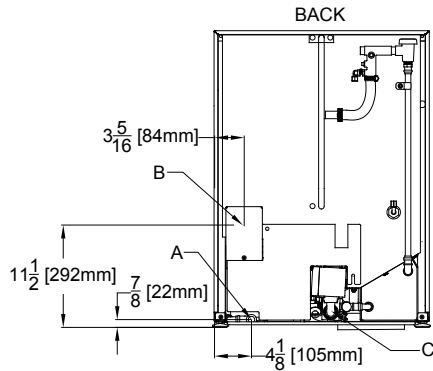
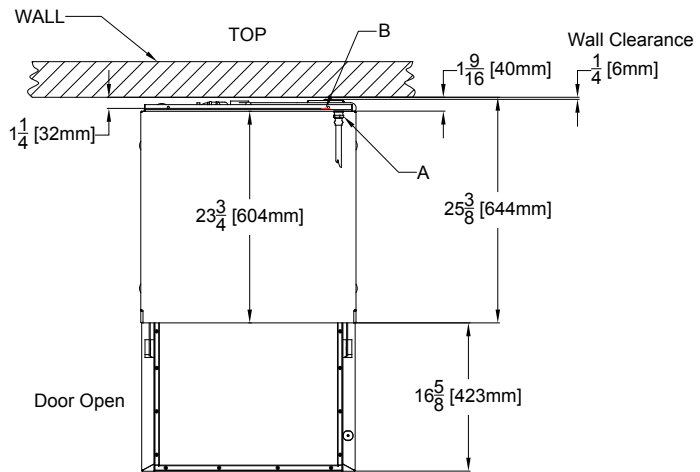
LEGEND:

A - Water Inlet - 1/2" Female Pipe Thread, 2 1/2" AFF (Connect to a true 1/2" ID water line)

B - Electrical Connection

C - Drain Connection - 10' coiled drain hose. Shipped inside machine. Must be installed no more than 24" AFF.

All dimensions from floor can be increased 1" with adjustable feet supplied.



| MODEL NO. | MACHINE DIMENSIONS | | | | WALL CLEARANCE | SHIPPING INFORMATION | | | | | |
|-------------|-------------------------|------------------------|------------------------|-----------------|----------------|----------------------|-------|--------------|---------------|--------------|--------------|
| | INSIDE CLEARANCE HEIGHT | INSIDE CLEARANCE WIDTH | INSIDE CLEARANCE DEPTH | DOOR OPEN DEPTH | | WEIGHT | CLASS | CUBE | HEIGHT | WIDTH | DEPTH |
| Avenger® HT | 14-1/2" (368 mm) | 20" (508 mm) | 20" (508 mm) | 42" (1067 mm) | 1/4" (6 mm) | 248 lbs (112 kg) | 92.5 | 23.3 cu. ft. | 42" (1067 mm) | 33" (838 mm) | 29" (737 mm) |

| APPROXIMATE TOTAL LOAD AMPS | |
|-----------------------------|------|
| 208/60/1 | 38.8 |
| 230/60/1 | 42.3 |

| ELECTRICAL REQUIREMENTS | |
|-------------------------|--------|
| Wash pump | 3/4 hp |

| WATER REQUIREMENTS | |
|----------------------|-------------------|
| Gallons per rack | 1.1 gal (4.2 L) |
| Gallons per hour | 26.4 gal (99.9 L) |
| Flow pressure (PSI) | 15 - 25 |
| Waterline size (IPS) | 1/2" |
| Drainline size OD | 1 - 3/8" |

| OPERATING CAPACITY | |
|--------------------|-----|
| Racks per hour | 24 |
| Dishes per hour | 600 |
| Glasses per hour | 864 |

| OPERATING CYCLE | |
|-----------------------|-----|
| Wash cycle (seconds) | 82 |
| Drain time (seconds) | 28 |
| Rinse time (seconds) | 10 |
| Total cycle (seconds) | 120 |

| OPERATING TEMPERATURES | |
|------------------------|------------------|
| Wash | 150 °F (65.6 °C) |
| Rinse | 180 °F (82.2 °C) |

HOW TO SPECIFY: Avenger® HT

SHIPPING ADDRESS
6209 North U.S. Highway 25E
Gray, KY 40734

MAILING ADDRESS
P.O. Box 1060
Barbourville, KY 40906

Tel: 1-888-800-5672
Fax: 606-523-1799
info@jacksonmsc.com

www.jacksonmsc.com
07610-003-34-02 (07/10)

